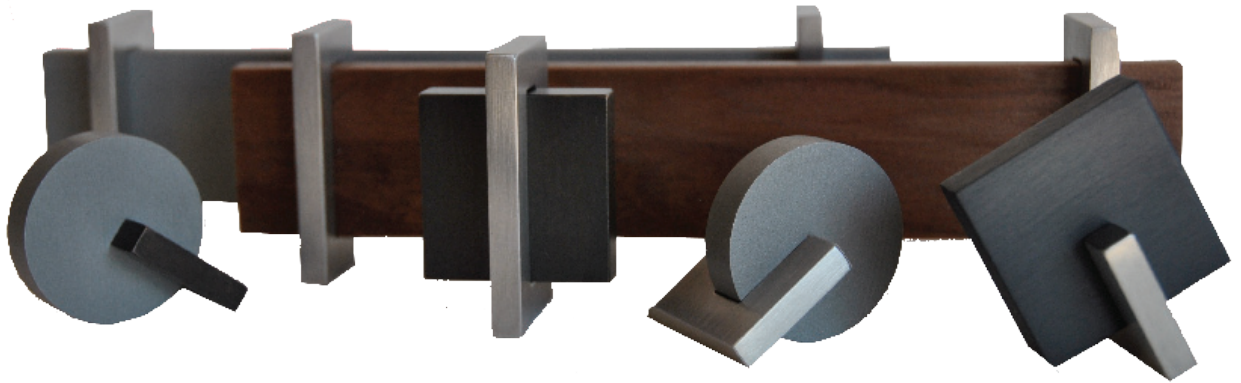


ABACUS PULL

designed by Matthew Quinn



REVEAL DESIGNS®

CABINET/FURNITURE HARDWARE

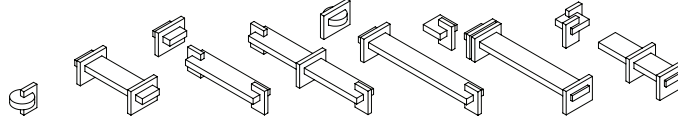
ABACUS PULL

designed by Matthew Quinn

DESIGN AND FUNCTION

- Power of design at your fingertips:
 - 1st: Choose the grip material and size;
 - 2nd: Choose an "O" mount or "C" mount in Stainless Steel or Oil Rubbed Bronze Finish; and
 - 3rd: Select the mount position on the grip

A few of the possible configurations...

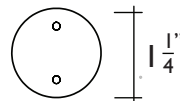


- Optional wood grip "warms" cabinet or furniture; custom woods available
- Installed either vertically or horizontally; concealed screws
- Inventory includes 1 1/4" Round, 1 1/4" Square, 5" and 8" grip sizes
- Handcrafted in U.S.A.

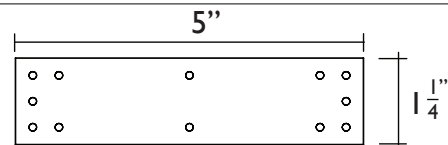
DIMENSIONS AND FIGURES

Grips (underside shown for configuration options)

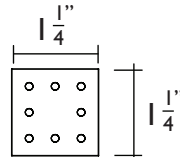
*All grips are 3/8" thick



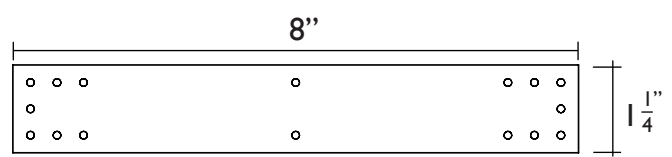
Product No. 624-RD*



Product No. 624-5*

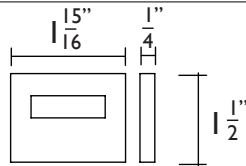


Product No. 624-SQ*

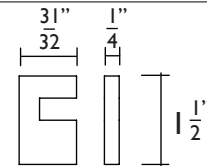


Product No. 624-8*

Mounts



Product No. 624-OMT ("O" Mount)



Product No. 624-CMT ("C" Mount)

AVAILABLE IN

Grips: Beech (Image 3); Walnut (Image 4); Stainless Steel (Darker Sandblasted)(Image 2); and Oil Rubbed Bronze Finish on Anodized Aluminum (Image 1)

Mounts: Stainless Steel (Images 1, 2, & 3), Oil Rubbed Bronze Finish on Anodized Aluminum (Image 4)

All Stainless Steel components made from 304 Stainless Steel
Oil Rubbed Bronze Finish on Anodized Aluminum is not a "live" finish
Custom Woods, Metals, Finishes and Sizes Available Upon Request



Ability to manufacture hardware to LEED certification standards

products@reveal-designs.com

www.reveal-designs.com

914 220 0277



REVEAL DESIGNS®

CABINET/FURNITURE HARDWARE

Image 1 (#624-SQ-ORB-28)
(#624-OMT-32D)

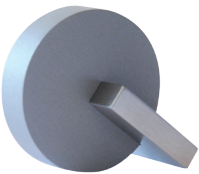


Image 2 (#624-RD-32D)
(#624-CMT-32D)



Image 3 (#624-5-BW)
(#624-CMT-32D(x2))



Image 4 (#624-8-WW)
(#624-CMT-ORB-28(x2))